



THE WEBFOOTER

**SINCE 1966 - THE OFFICIAL PUBLICATION OF THE
WEBFOOTERS POST CARD CLUB IN PORTLAND, OREGON**

"Every subject known to man can be found on a post card" - Club Motto

www.thewebfooters.com

Volume 42

Issue Number 12

December 2008



Merry Christmas



Next Meeting - December 20, 2008

At Russellville Grange - 12105 NE Prescott Street

10:00 am to 4:00 pm - Card sales to begin after the business meeting

Christmas Potluck at Noon



President's Corner

November's meeting was a record breaker in the history of The Webfooters! Nearly 70 people came through the doors, the parking lot was full and we had cars parked up the street. Nearly every available spot for a table was taken. We've never had that many dealers there at one time. Thanks to Chef Steve Bieler, the food was awesome, again. Thanks to Terry Weis for bringing those donuts, which got us off to a great start.

We welcomed back David (no. 1586) and Wilma Torretta (no. 1587), from Puget Sound, who set up a table with many of their Halloween cards. They are collectors who have one of the most diverse and complete Halloween collections to be found. So the Halloween cards they sell are really top tier cards. We look forward to seeing them at more of our gatherings. Halloween cards are probably the number one topical category in popularity. Some of them are so captivating.

A round of applause to Jerry Kelly, member no. 1565, who gave a very educational digital slide presentation on Postcard Collecting and the History of Postcards. Thanks Jerry for all the tireless hours you have put in to make this possible. It was a top notch production and it will only help add more collectors to our ranks. This is a very important and rewarding effort in educating the public about the joys and benefits of postcard collecting. Kudos to Jerry!!

With 216 members and growing, The Webfooters are enjoying the popularity of postcard collecting. Remember, for every Club or Show postcard we give to an unknown collector, we have another potential member. We saw nearly 20,000 postcards for sale at our last meeting. The prices were fair and there were deals to be made. This is a good sign for dealers and collectors. The cards are out there and so are the buyers. We know that postcards will only increase in value.

Even with an economy that is shrinking, we were all thrilled to see so many members at our last meeting. I think we all have a sense that things will begin to improve in a few months or so, even though some tough times may be ahead. We survived and built back after the recession that occurred after 9-11. We live and breathe postcards and we don't want to miss that rare find. Many postcard collectors agree; if we pass on a card we really want, we may never see it again.

Club meetings and events provide inexpensive opportunities for anyone, whether they are a dealer or not, to buy and sell at our meetings. If someone wanted to rent a table at our meetings, our only requirement is that you must be a current member. Many of our members regularly donate cards for club sales. This helps to replenish our Club Cards with fresh stock. This has proven to be a good revenue source for club expenses.

Thanks to the efforts of our board members and all of you who volunteer your time and investments, The Club's assets and accounts are growing. Rental costs for the Grange are usually covered by table rents from dealers and sales of club cards. Thanks to each of you in helping to pitch in to cover our lunch costs. So the bottom line is we are operating at a slight profit. However, our last two auctions and shows have been very good to The Club, getting us on our way to the "Rainy Day Fund". At our annual meeting, your current officers were re-elected, with the exception of our membership chair who is stepping down at the end of the month. At this time, no one has given a definite acceptance to filling this position in 2009.

SHOW DEALERS – This is the last call for early bird discount for tables. All dealer contracts must be signed, paid, and in the hands of the show chair by December 31, 2008 to receive the discount. Our 29th Annual Show and Sale is coming up in just four months.



Roster Additions

We welcome Dave & Wilma Torretta!!

Torretta David	1586	
Torretta Wilma	1587	Clearlake, WA

Collect: Halloween; Santas



42nd Annual Christmas Potluck December 20, 2008

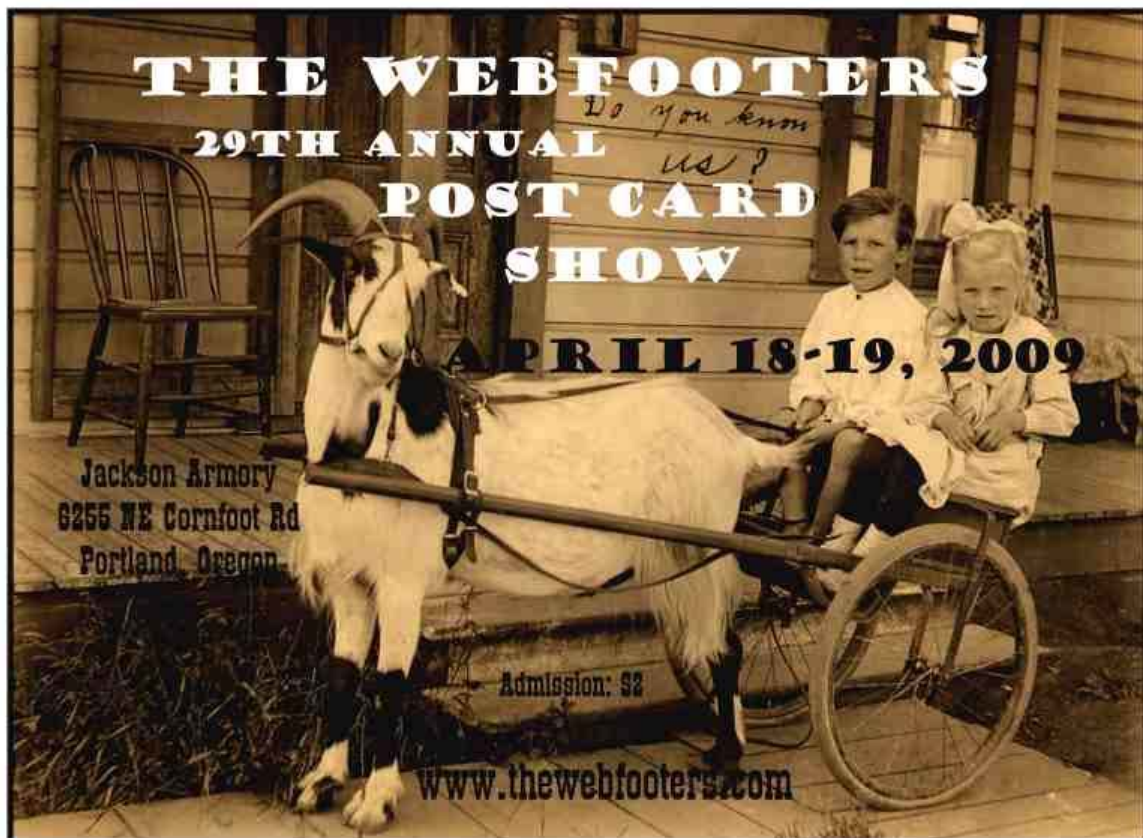
Christmas Potluck at Noon

Bring salads, side dishes and desserts

Ham & refreshments will be provided

Meeting Hours: 10:00 am to 4:00 pm

Card sales to begin after the business meeting



Remember, for every Club or Show postcard we give to an unknown collector, we have another potential member.



The Nimble Nicks of Christmas Land – Revisited

Revised from an article in the Dec. 2005 Webfooter Newsletter



Civil War veteran George Whitney founded the Whitney Publishing Company in his hometown of Worcester, Massachusetts where they produced beautiful 19th-Century Valentines that became popular with collectors everywhere. But Whitney also gained much admiration and respect for having made the Christmas season a happier, more colorful holiday in the years before World War I.

Beginning at the turn of the century and continuing up into the 1920s, the Whitney Company manufactured huge numbers of greeting cards, children's books, souvenir post cards, paper toys and novelties of every description for Christmas. Whitney also produced outstanding ephemera for other holidays, including Halloween and Easter, but Christmas was the big seller.

In the process of creating and marketing this huge output of merchandise for the nation's five-and-dimes, department stores, variety shops and other retail outlets, Whitney introduced a line of "Nimble Nick" products. The Nimble Nicks, cute little babies in Santa suits, were American originals. They loved a good time almost as much as they loved helping Santa make toys and to help him get ready for his once-a-year Christmas Eve trip.



Brightly-colored embossed Christmas post cards featuring happy, frolicking children were issued in sets of six. Typically, there were children packing or unpacking toys and presents; reading wish lists; trudging through the snow and placing gaily-wrapped packages under Christmas trees.

Nimble Nick souvenir post cards and other paper goods as well as storybooks, were probably introduced about 1915 and stayed in production until the early 1920s. Several dozen different designs were printed, each in runs of hundreds of thousands of copies. In addition, the Whitney Company produced postcards with easel stand-ups and illustrated books.

Each delightful Nimble Nick was a playful little imp whose greatest thrill in life was wearing a tiny Santa Claus suit. Their charm has endured well over the years and many collectors today are in love with them.

They lived in a fantasy place called Christmas Land, where snow remained year-round. At first, they are usually mistaken for fairies, elves or pixies. However, a closer examination reveals the chubby fellows and gals (there's one or more girls as well) to be no more than children who never grow up.

They are taller and larger than the various mythical forest creatures they are often confused with, and they are perfectly proportioned. Each Nick has blonde hair and one curl at the top of his forehead which peaks out from under the red hood. The hair, diminutive size and Santa Claus outfits are their trademarks, forever tagging them as Nimble Nicks.

The Nicks dwelled in cute tiny houses that did not even reach a regular person's knee and they drove around Christmas Land in kiddy-cars (so the illustrated storybooks tell us). Also, at party time, out came the "funny little chairs" upon which the little fellows sat while eating their favorite treat, turkey stew.





When they were not helping Santa Claus, the Nicks enjoyed life to the hilt. One of their greatest pleasures was to see how many Nicks could ride together on giant sleds and go cascading down snow-covered hills without falling off. Another activity enjoyed by all was incessant snowball fighting.



See the full color version of this newsletter at www.thewebfooters.com






Whitney published his many different designs of the Nimble Nicks in vivid red colors. These, like the firm's other Christmas merchandise, were sold nationwide in stores such as Woolworth's, well into the late 1920s and early 1930s, though the actual printing of them had stopped several years before, around 1925.



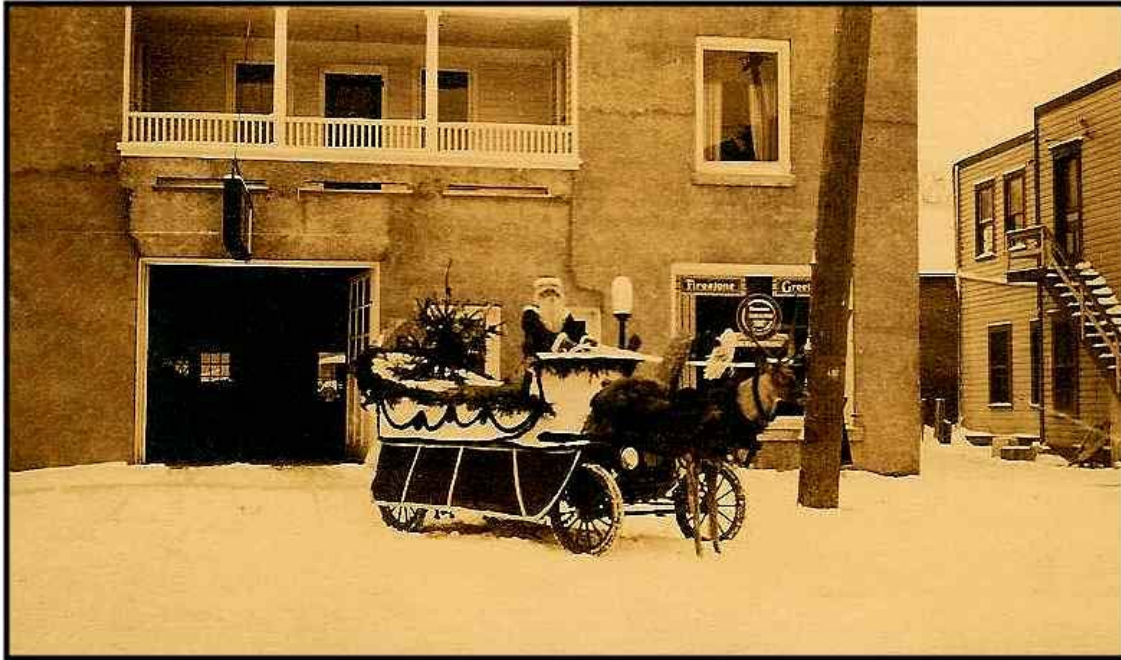
To these collectors nothing is more treasured today than the ephemera associated with the Nimble Nicks – Santa's helpers up North in a place called Christmas Land.

(Condensed from an article by Roy Nuhn).

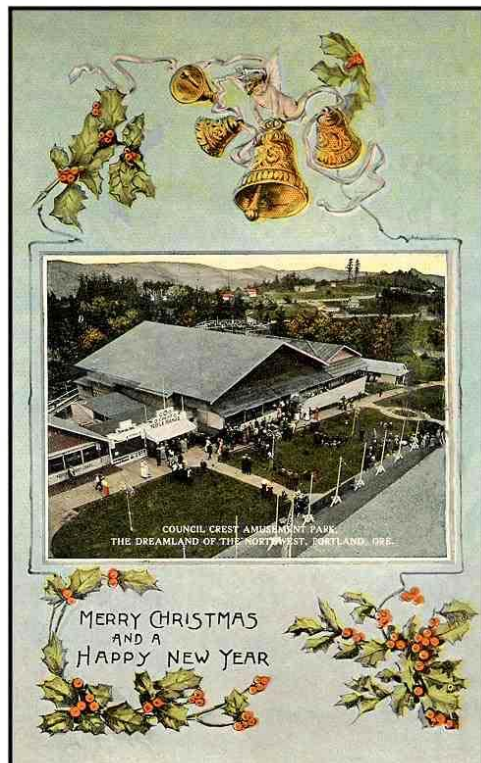
HAPPY  HOLIDAYS

RPPC of the Month

With this issue, we introduce a new feature, Real Photo Post Card of the Month.



Greetings from: Santa and his "reindeer" at Firestone.



Christmas Greetings from Council Crest Amusement Park on a mountaintop in Portland, Oregon.

Board Meeting Minutes

Attending the November 12, 2008 Webfooter's Board Meeting, held at Elmer's Restaurant were: Mark Moore (President), Tony Roberts (Vice President), Arne Soland (Treasurer), and Maggie Parypa (Secretary). After a call to order at approximately 7:00 PM, the minutes of the previous meeting were approved as published.

Financial Report – Arne Soland gave a financial report. Since our rent has doubled for the meetings this year, table rent at meetings was increased to \$7.00 for a full table and \$4.00 for half tables.

Report of Standing Committees

Membership Chair Steve Bieler reported via email that there are 216 Active Members (99 individual Members, 82 Family Members, 28 Patron Members, 6 Honor Members and 1 Charter Member). Approximately 23 active members owe dues. Unfortunately Steve Bieler will not be able to continue as Membership Chair next year. Please consider filling this important roll for our club in our upcoming election. He has offered to teach the new officer until the new person has become comfortable with the position. Arne Soland can accept dues for membership if Steve is not available at the meetings. Maggie Parypa purchased a stamp with Webfooter's information to use all the extra membership cards that can be given to friends and acquaintances as Club advertising cards. We've been told that one of our members who sees a stranger looking at postcards isn't bashful about handing them a Webfooters Card to invite them to a meeting.

Refreshments – Reimbursement of up to \$30 is available for those contributing this service. If you are providing refreshments don't forget to save your receipts for Arne.

Auction/Show – Dealers, if you sign up for the show by December 31st, you will receive a \$10 discount off your table fee. Thanks to our dealers for showing your support of The Club. Everyone, please take show cards to shops in your neighborhoods to help us advertise both our club & our upcoming show.

New Business

The Club will be providing Ham & Juice Beverages for the Christmas Potluck dinner on December 20th. We would like to encourage members to bring salads & healthy vegetables along with the wonderful desserts that we always receive.

A special Thanks to Jerry Kelly for his fun & informative slide presentation on the history of postcards during our November Meeting. He showed real photo post cards of the shipping & logging industry near the Columbia River at Kelso & Longview, Washington. He detailed postcard eras from 1903-1993. He recognized the following members for sharing their images for his show: Mary Adams, Judy Cowell, David Elston, Brian Hansen, Steve Kenney, Terry Martin, Glenn Mason, Joe Macdonald, Mark Moore, Phyllis Palmer, Al Powers, Linda Renk, Frank Tyrrell, Glenn Theisfeld & Terry Weis.

The meeting was adjourned at 8:30 PM.

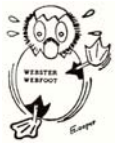
The next board meeting will be held on Wednesday, January 14th, 2009.

Respectfully submitted,

Maggie Parypa, Secretary

See the full color version of this newsletter at www.thewebfooters.com





Club Officers

President/Editor.....Mark Moore
 Vice President.....Tony Roberts
 Secretary.....Maggie Parypa
 Treasurer.....Arne Soland
 Membership Chairman.....Steve Bieler
 Members-at-Large.....Irene Adams, Brian Hansen and Phyllis Palmer
 Historian.....Joe Macdonald
 Librarian.....Steve Kuryk



Calendar

December 20 – Webfooters Post Card Club Meeting at Russellville Grange
 12105 NE Prescott St near 122nd & Sandy Blvd – 10:00 am to 4:00 pm

January 14 – Webfooters Board Meeting at Elmer’s Restaurant (no host)
 10001 NE Sandy Blvd – 6:30 pm (Board Meetings held every other month)

January 17 – Webfooters Post Card Club Meeting at Russellville Grange
 12105 NE Prescott St near 122nd & Sandy Blvd – 10:00 am to 4:00 pm

For the latest news, visit our website:



www.thewebfooters.com



WEBFOOTERS POST CARD CLUB

PO Box 17240
 Portland OR 97217-0240

