



The official publication of The Webfooters Post Card Club in Portland, Oregon

www.thewebfooters.com

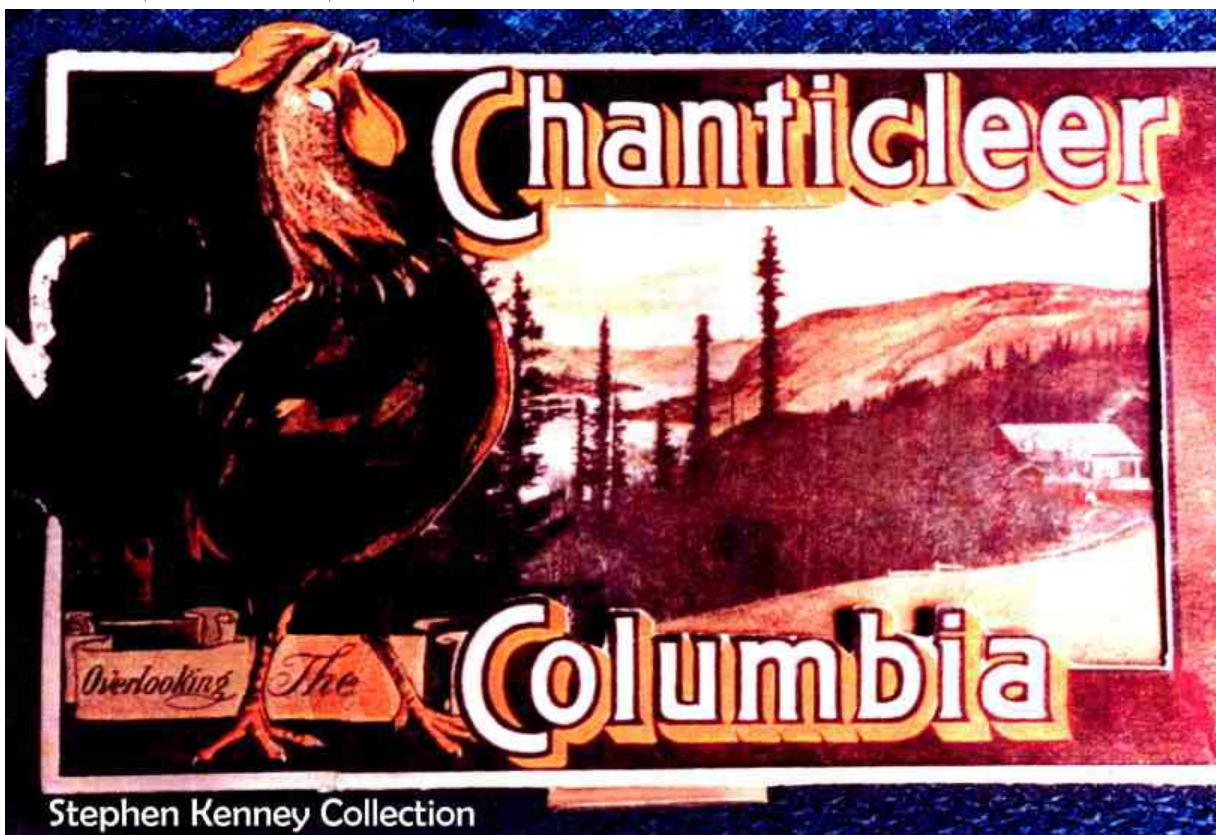
Volume 45

Issue Number 10

October 2011



THE MAGIC OF CHANTICLEER

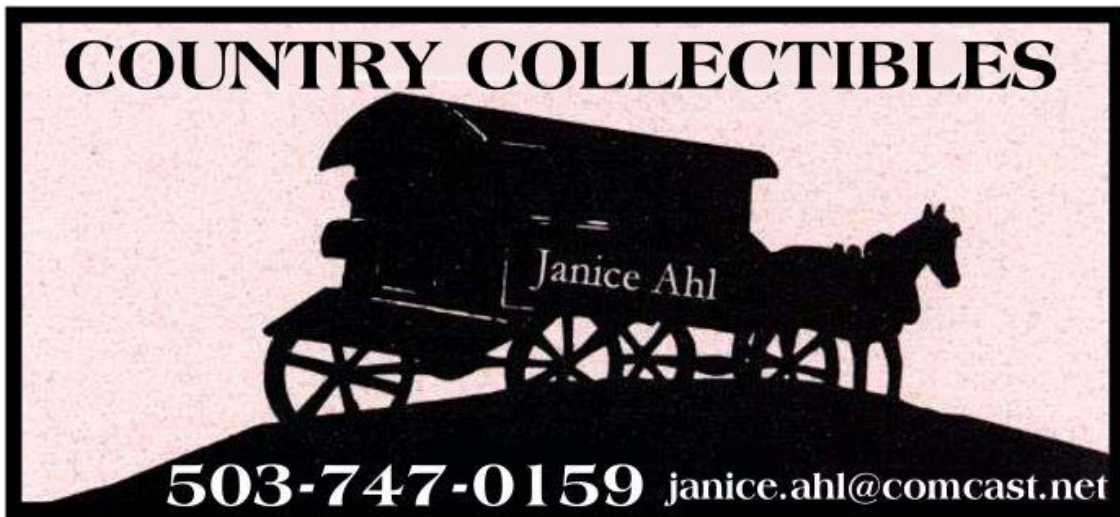


See the Magic of Chanticleer on page 4.
See Maggie's Minutes on Page 9.
See Member News on Page 2.

Next Meeting – October 15, 2011

At Russellville Grange – 12105 NE Prescott Street

9 am to 3:30 pm (Business Meeting at 10)



Now Located at:

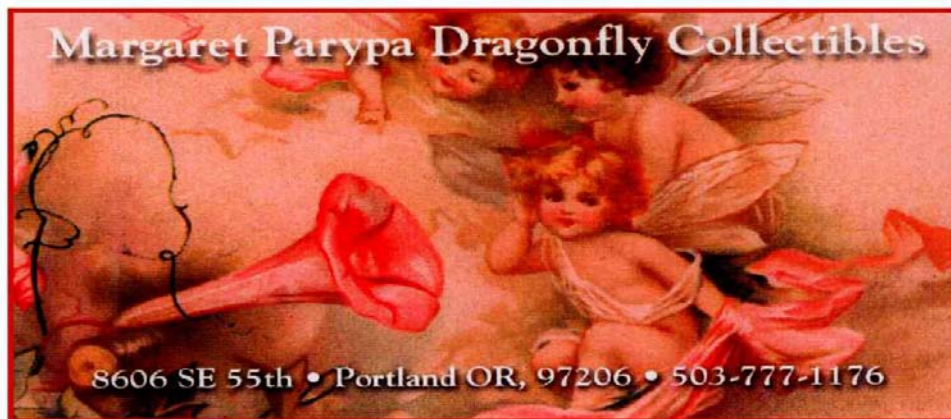
FARMHOUSE ANTIQUES

Mini Mall in Old Historic Sellwood with Seven Dealers

Tuesday thru Sunday: 11 to 5
Glassware - Depression - Elegant
Postcards - Paper - Sheet Music
Jewelry - Furniture

See Janice on Tuesdays
8028 SE 13th Avenue
Portland OR 97202
503-232-6757

**Also in Farmhouse Antiques in Sellwood
8028 SE 13th Avenue**



(paid advertisements)

**THANKS TO OUR ADVERTISERS FOR THEIR
SUPPORT WHICH HELPS OFFSET OUR EXPENSES**

MEMBER NEWS

It is with sadness that we report the passing of Dave Bowers, Webfooter number 891 on September 4, 2011. Our thoughts and prayers go out to his wife Karen.



Northwest Collectibles Presents
The Largest Antique Paper Shows in the Northwest

The Greater Portland
Postcard, Stamp & Antique
Paper Show

October 22 and 23, 2011

Kliever Armory
10000 NE 33rd Drive
Portland, OR

Old Postcards, Photographs, Stereo View Cards, Books,
Stamps, Valentines, Matchbooks, Magazines, Prints,
Maps, Trade Cards, Movie Posters & Much More!

Show Hours:

Saturday: 10 am - 6 pm
Sunday: 10 am - 4 pm
Admission: \$5 (Good for Saturday & Sunday)

Upcoming Shows:

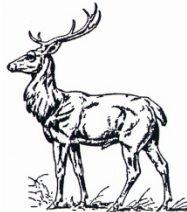
Portland, Oregon
at Kliever Armory
February 25 and 26, 2012

Kent, Washington
at Kent Commons
February 19 and 20, 2012

Call or Write:

Terry Weis
601 NW 72nd Circle
Vancouver, WA 98665-8462
503-679-4755

Jeremy LeRoque
5881 Live Oak Ln
Redding, CA 96001-4617
626-665-9435



www.postcardshows.com

FREE APPRAISALS

(paid advertisement)



Magic and enchantment are two words that come to mind when you mention Chanticleer. Merriam Webster says the word is used to describe a rooster. I think we can safely assume that the Chanticleer Inn, an eating establishment high above the Columbia River about 25 miles east of Portland, was named after the rock pinnacle known as "Rooster Rock" which can be seen below Crown Point. Chanticleer was advertised as "the best place on earth to be served with a Cream Chicken Dinner, Country Style."

The name Chanticleer was also the name given to a Carousel at Steeplechase Park on Coney Island about 1905. The Carousel was made in Europe and all of the carved wooden animals were roosters. By misfortune, the ship sunk in shallow water in a shipwreck in the North Sea on the way to America. The Carousel was later salvaged and restored to operate at Coney Island where it remained until 1964.

Built about 1000 feet above sea level, the Chanticleer Inn hosted many a general, several presidents and many foreign dignitaries. Before the Columbia River Highway was opened in 1915, the only way to reach Chanticleer was by taking the unpaved Military Road, which took considerable time to navigate.



Chanticleer Inn

ON THE COLUMBIA RIVER HIGHWAY

CHANTICLEER IS NOW OPEN

Make Your Reservation by Phone
LONG DISTANCE CHANTICLEER

A SPECIALTY will be made of Cream, Chicken and Fish Dinners, Country Style. Planked Sirloin Steaks will be served when ordered in advance. SPECIAL ATTENTION given to Dinner Parties and Banquets

CHANTICLEER is a first-class Country Inn. *No Liquors.* Just the place to take your family and friends for an enjoyable outing.

LOCATED twenty-two miles east of Portland on the Columbia River Scenic Highway; elevation one thousand feet above sea level.

[Magnificent panoramic view is obtained of the
Columbia River Gorge for a distance of fifty miles]

CHANTICLEER HOTEL CO.

A. R. MORGAN, *Manager*

Mr. and Mrs. A.R. Morgan teamed up with Mrs. M.E. Margaret Henderson, who sold her house to invest in the business venture. They pooled their resources and opened the Chanticleer Inn in 1912. Mrs. Henderson, who was nicknamed "Bidy," managed the Chanticleer Inn, and she quickly established her abilities to satisfy the palettes of the rich and famous before the Columbia River Highway was built. Her reputation and her influence was a contributing factor in the development of the Columbia River Highway. Her meals became so popular and attracted so much traffic that an improved road was eventually built.



Cliff Nelson Collection

M.E. Margaret Henderson

Dignitaries from all over the world traveled to experience Bidy Henderson's extraordinary hospitality. Though no known records exist of who actually visited Chanticleer Inn, one can speculate that folks who made it to Crown Point may have stopped at Chanticleer on the way. We know that Henry Kaiser, Frank W. Woolworth, Roscoe "Fatty" Arbuckle, Eddie Rickenbacker, Cornelius Vanderbilt Jr., Charlie Chaplin, Henry Ford, Harold Lloyd, and Mrs. Marshall Field visited Mrs. Henderson's Crown Point Chalet. This is documented in *The Guestbooks of the Crown Point Chalet* by her great-grandson Clifford D. Nelson.

Mrs. Henderson was probably the most influential entrepreneur in the history of Columbia River Highway roadhouses. She began her career working for Portland's Meier & Frank department store as a waitress and window designer, and she used her skills in interior decorating to design and furnish her eating establishments.



Chanticleer, famous for Cream Chicken Dinners, was a popular stop on the Columbia River Highway in 1926.

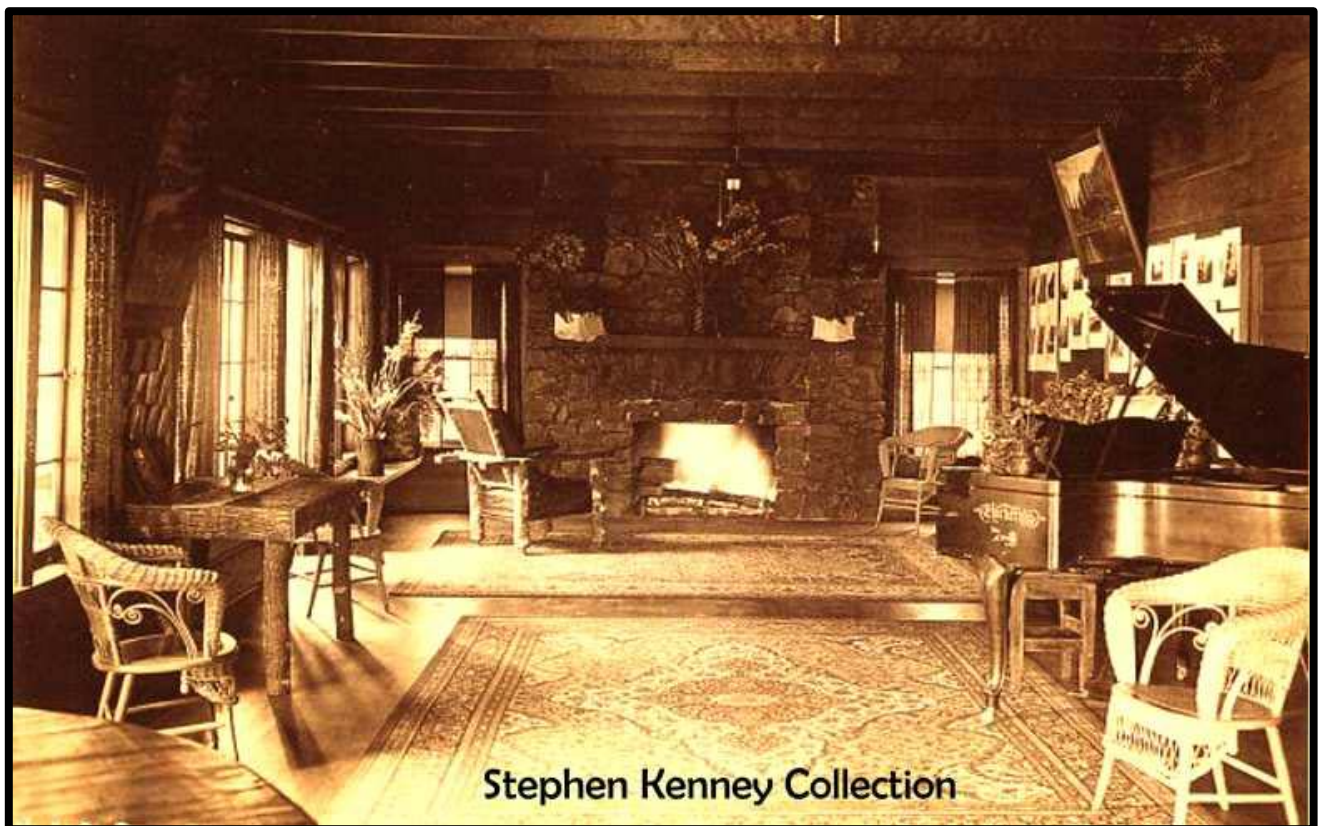


View of the of the Observation Porch at the Chanticleer Inn circa 1912. The porch was later enclosed.

See the full color version of this newsletter at www.thewebfooters.com



Interior view showing the Reception Hall at the Chanticleer Inn.



View of the Reception Room at the Chanticleer Inn.

After building Maryhill Museum, Sam Hill, who is credited with helping to design the Columbia River Highway, wanted a paved road to make access to his museum easier. The State of Washington decided they had more important things to spend money on and Hill turned to Oregon. He persuaded the State of Oregon to build the Columbia River Highway, which was hailed as a scenic wonder and engineering marvel.

Hill corralled the money, provided his own engineer and brought the Columbia River Highway to reality. Hill had meetings with dignitaries at Chanticleer to persuade them to build the highway. Hill decided more people should experience the ambiance of the Chanticleer Inn and he campaigned for a new highway to bring those people to Chanticleer. After the highway opened, Chanticleer welcomed even more hungry motorists.

The Chanticleer Inn burned down October 8, 1930. It is said that a patron who was intoxicated and upset that liquor was not served, left a smoldering cigarette in the restroom wastebasket. You can still see Chanticleer's enchanted view today from the Women's Forum Park, just west of Crown Point. It is the frame of one of Oregon's most photographed spots.

Even though she entertained the rich and famous, Mrs. Henderson would not allow the consumption of liquors at her establishments, because she did not want her patrons to die from driving while intoxicated. Mrs. Henderson sold her interest in 1914 and went on to open the Latourell Falls Chalet, which burned after being open for only three months. She then moved on to open the very successful Crown Point Chalet.

Failing health caused Mrs. Henderson to sell the Chalet in 1927. Moving to Portland, Mrs. Henderson opened a modest third floor Dining Room on Alder Street. She died at the age of 58 in 1930 after battling a chronic kidney infection. Eventually, the long-vacant, deteriorated Chalet building was demolished in the 1950s.

Chanticleer was one of many roadhouses that either burned down or were torn down in the name of "progress". When the Interstate 80 (now I-84) freeway was built about 1962, customers were diverted away from the Columbia River Highway and business went with it.

<p>WHERE IS CHANTICLEER?</p> <p>THIS mecca for automobilists is located on main Hood River Highway, 22 miles East of Portland, just above Rooster Rock. From Chanticleer a magnificent panoramic view is obtained of the Columbia River Gorge for over 30 miles. Snow-capped mountains are seen, cool and delightful among the evergreen hills. The grandeur of this scene makes the Hudson River fade into insignificance.</p> <p>MRS. M. E. HENDERSON HOSTESS</p>	<p>WHAT IS CHANTICLEER?</p> <p>IT is the best place on earth to be served with a delicious, home-cooked cream chicken dinner, country style, crisp hot biscuits and dainty desserts. Salmon dinners in season.</p> <p>CHANTICLEER is an ideal place for ladies' afternoon teas and card parties. Reservations for such functions will be promptly attended to.</p> <p>NO LIQUORS SERVED AT CHANTICLEER</p> <p>Parties wishing to make reservations for meals or sleeping accommodations, phone Long Distance Corbett, Oregon, and ask for Chanticleer.</p>
<p>MOTORISTS DO NOT FAIL TO VISIT CHANTICLEER</p>	

Editor's Note:

Mark's story was originally published in the Summer 2011 edition of *Vista House Views*, the quarterly newsletter published by the Friends of Vista House.



Maggie's Minutes



Attending the September 14, 2011 Webfooter's Board Meeting held at Elmer's Restaurant were: Mark Moore (President), Maggie Parypa (Secretary), and Arne Soland (Treasurer) After a call to order at approximately 7:00 pm, the minutes of the previous meeting were approved as published.

Financial Report – Arne Soland gave a financial report.

Membership – Krissy Durden, our Membership Chair, reported via email that there are 216 Active Members (97 individual members, 75 Family Members, 26 Patron Members, 7 Honor Members and 1 Charter).

Refreshments – Reimbursement of up to \$40 is available for those contributing this service. If you are providing refreshments don't forget to save your receipts for Arne. There is a sign-up sheet at the monthly meetings. Thank you to Mark Moore for providing bread & beverages, Maggie for deli meats & cheese with coleslaw and to Terry Weis who contributed two chocolate cakes.

Mark arranged a group tour of the Curtis Transportation Collection near the old Powell Drive Inn Theater at 10177 SE Powell Boulevard on September 21st. The collection may be disbursed as the heirs of the estate are expected to divide up the collection. About 26 Webfooters and friends attended the tour.

New contracts are available for next year's Show & Sale. Table Rent will be \$60 if paid by December 31, 2011 and \$70 after that date. Mark shared the new designs on the show and club advertising cards. At the Membership Meeting on Sept. 17, we voted to renew honorary membership for Scott Blackett for his help with the printing of our club and show postcards.

For our annual meeting on November 19, Mark suggested a seminar on how to care for and repair postcards and ephemera. We hope to announce a special speaker soon. Postcard World Magazine, which seems to get better with each issue, had several informative articles on the subject in recent issues. Also, Mark has been asked to contribute articles to the magazine on a regular basis. This is a well-deserved honor that will also help advertise our club. His article on Horse-Drawn Views has been expanded and will be published in the upcoming issue. The cost of the magazine is a very reasonable \$44.00 for twelve issues. It is published every other month and the subscription is good for two years. Their articles have been very informative and it is full of color.

On Tuesday October 25, 2011 at 6:30 pm, McMenamins Edgefield in Troutdale will host a lecture with images of the Historic Columbia River Highway. Presenters will be Dr. Robert Hadlow, historian for the Oregon Department of Transportation and George Fekaris from the Federal Highway Administration, Western Federal Lands Division. The lecture will last about 90 minutes in the Edgefield Power Station.

The meeting at Elmer's was adjourned at 7:30 PM.

The next board meeting will be held on November 16th, 2011 at Elmer's Restaurant at 10001 NE Sandy Boulevard.

Respectfully submitted,

Maggie Parypa, Secretary

Find us on Facebook 

Please join us on Facebook to get reminders about meetings, special collections and to keep in touch. When on Facebook, just do a search for Webfooters PostcardClub.



Club Officers

President/Editor.....	Mark Moore
Vice President.....	Tony Roberts
Secretary.....	Maggie Parypa
Treasurer.....	Arne Soland
Membership Chairman.....	Krissy Durden
Director.....	Irene Adams
Historian.....	Joe Macdonald
Librarian.....	Steve Kuryk



Calendar

October 15 – Webfooters Post Card Club Meeting at Russellville Grange
12105 NE Prescott St near 122nd & Sandy Blvd – 10:00 am to 3:30 pm

November 16 – Webfooters Board Meeting at Elmer’s Restaurant (no host)
10001 NE Sandy Blvd – 6:30 pm (Board Meetings held every other month)

November 19 – Webfooters Post Card Club Meeting at Russellville Grange
12105 NE Prescott St near 122nd & Sandy Blvd – 10:00 am to 3:30 pm

For the latest news, visit our website:



www.thewebfooters.com

Find us on Facebook



WEBFOOTERS POST CARD CLUB

PO Box 17240
Portland OR 97217-0240



CHANTICLEER INN



VIEW of COLUMBIA RIVER GORGE FROM CHANTICLEER INN, COLUMBIA RIVER HIGHWAY, PORTLAND, OREGON
Portland's Rose Festival occurs in June of each year.

SEE PAGE 4 FOR THE MAGIC OF CHANTICLEER.