



The official publication of The Webfooters Post Card Club in Portland, Oregon

www.thewebfooters.com

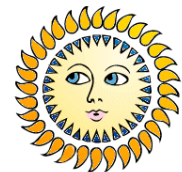
Volume 45

Issue Number 8

August 2011



SUMMER GREETINGS

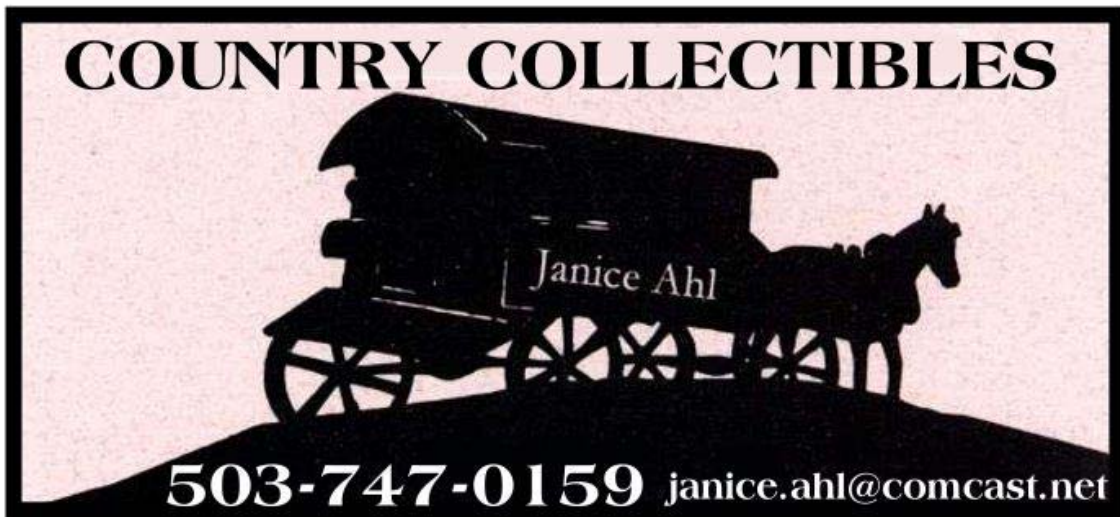


- See the story of Playland at-the-Beach on page 3.
- See Member News on page 2.
- See New Members on page 8.
- See Maggie's Minutes on Page 9.

Next Meeting – August 20, 2011

At Russellville Grange – 12105 NE Prescott Street

10 am to 3:30 pm



Now Located at:

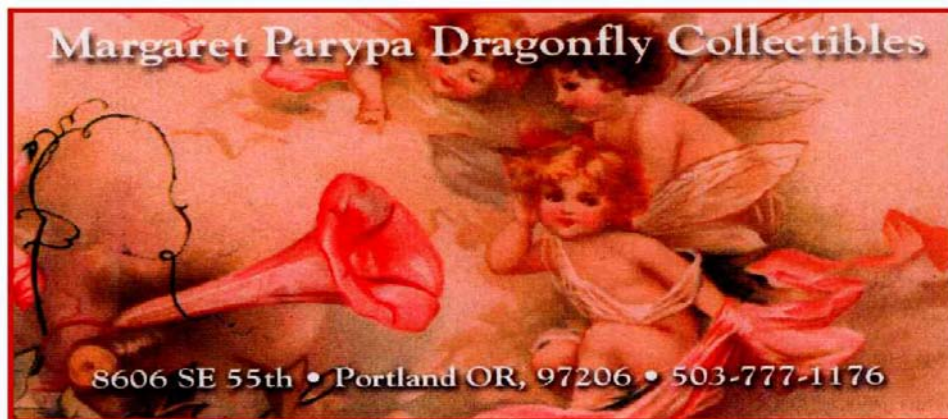
FARMHOUSE ANTIQUES

Mini Mall in Old Historic Sellwood with Seven Dealers

Tuesday thru Sunday: 11 to 5
Glassware - Depression - Elegant
Postcards - Paper - Sheet Music
Jewelry - Furniture

See Janice on Tuesdays
8028 SE 13th Avenue
Portland OR 97202
503-232-6757

**Also in Farmhouse Antiques in Sellwood
8028 SE 13th Avenue**



(paid advertisements)

**THANKS TO OUR ADVERTISERS FOR THEIR
SUPPORT WHICH HELPS OFFSET OUR EXPENSES**

Member News

It is with sadness that we report the passing of Webfooter no. 1506, Margaret Brockhaus. We were notified when the last issue of her newsletter was returned with a note that she had passed away in 2009.

Playland-at-the-Beach

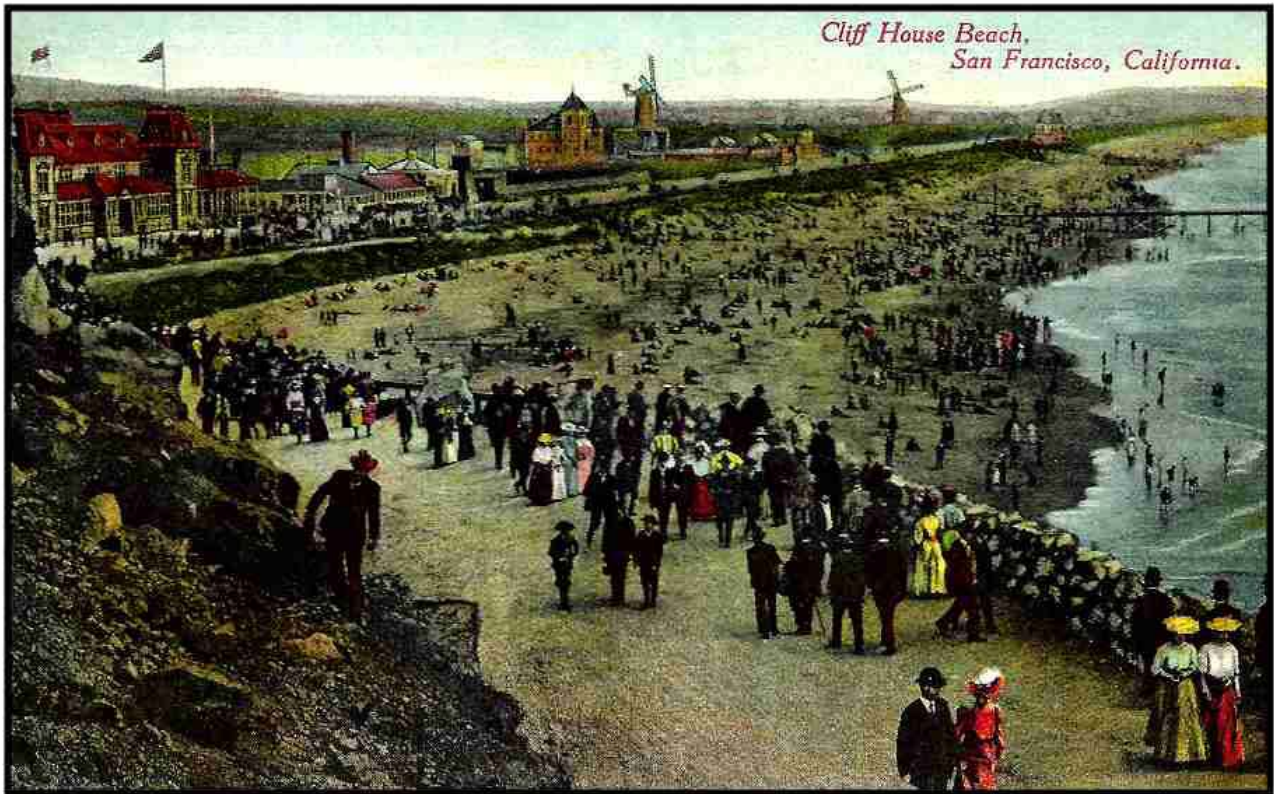


The area that was Playland began as a 19th century squatter's settlement, "Mooneysville-by-the-Sea" at the western edge of San Francisco. By 1884, a steam railroad was in place to bring people to the first amusement ride at the City's ocean side — a "Gravity Railroad" roller coaster, and to the Ocean Beach Pavilion for concerts and dancing. By 1890 there were three streetcar lines to Ocean Beach: the Ferries and Cliff House Railroad, the Park & Ocean Railroad and the Sutro Railroad. The Cliff House, which opened in 1863, and Sutro Baths, which opened in 1896, were very popular and they drew thousands of visitors.

San Francisco was becoming the "Playground of the West Coast" and in 1913, Arthur Looff leased a plot of ground for a carousel and its house at the Chutes-at-the-Beach. Looff's Hippodrome was an elegant 68-horse merry-go-round with a \$5,000 organ, a staggering amount at that time.



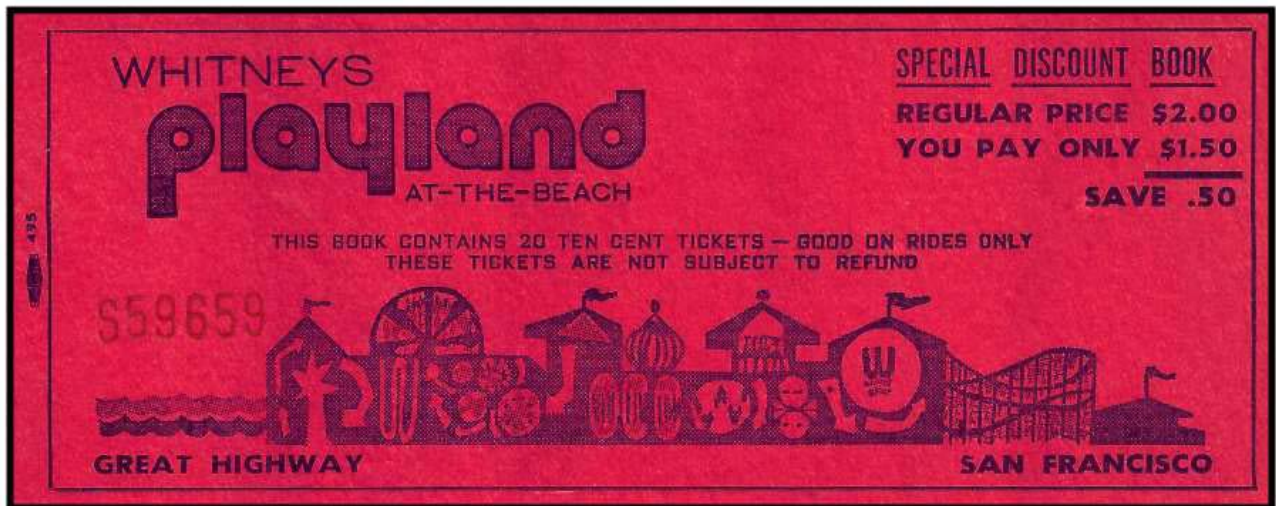
Aerial view of Playland-at-the-Beach showing The Cliff House behind.



Brothers Leo and George Whitney came to San Francisco and opened a photographic concession in 1923, pioneering a rapid photo-finishing process that allowed people to take pictures home after a few minutes rather than having to wait days for the film to be developed and images printed. By 1924, the Whitney brothers owned four shooting galleries and a souvenir shop in addition to the quick-photo studio.

Among the more popular concessions was the Fun House, erected in 1924. Laughing Sal's hideous cackle echoed throughout the park, summoning patrons, many of whom still remember the Fun House's mirror maze, the air jets, the topsy-turvy barrel and the three-story climb up to the top of "the longest, bumpiest indoor slide in the world."

George Whitney became manager of the amusement park in 1926 and promptly changed the name to Playland-at-the-Beach. During the Depression, when many of the concessions began to fail, the Whitney brothers bought them from the independent concessionaires. George was able to buy the roller coaster in 1936 and the merry-go-round in 1942.

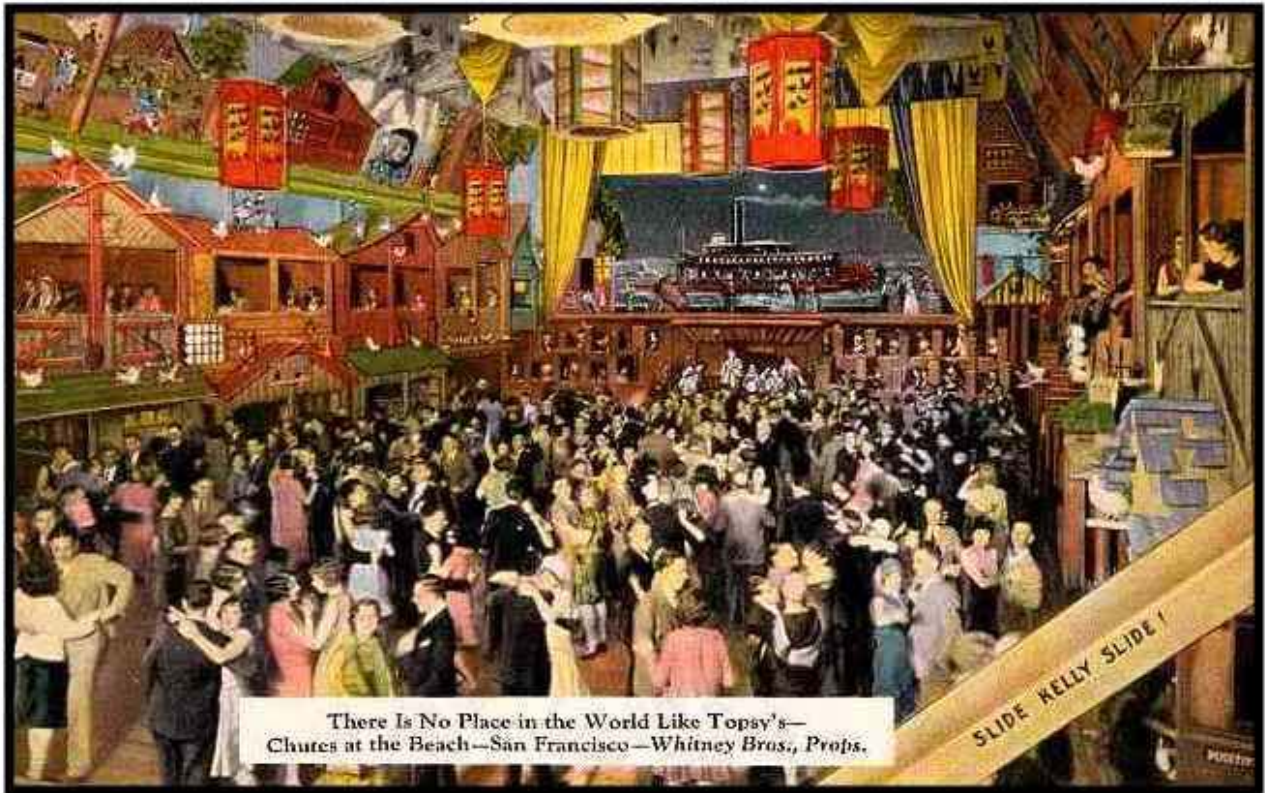




Playland occupied three city blocks and by 1934 the Midway had 14 rides, 25 concessions and four restaurants in addition to Topsy's Roost.

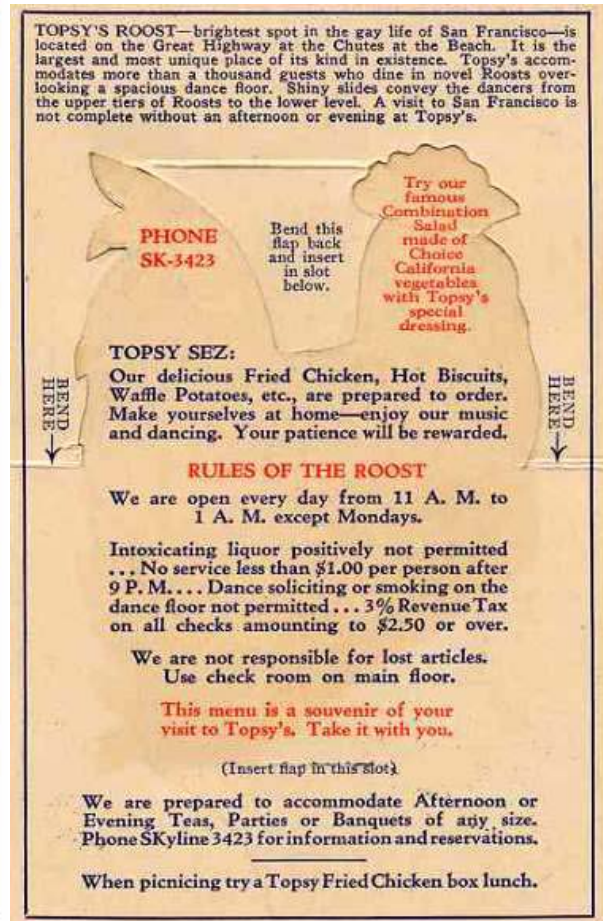
George Whitney opened Topsy's Roost in 1929 and it soon became San Francisco's most favorite spot at Playland-at-the-Beach. Driving south along the beach from the Cliff House, the first building you came to was Topsy's Roost, a very popular chicken dinner house and nightclub. You could dance to a live orchestra and there was seating on the main floor as well as the balcony. If you were sitting on the balcony level and you wanted to dance, there were slides to take you right down onto the dance floor.





See the full color version of this newsletter at www.thewebfooters.com

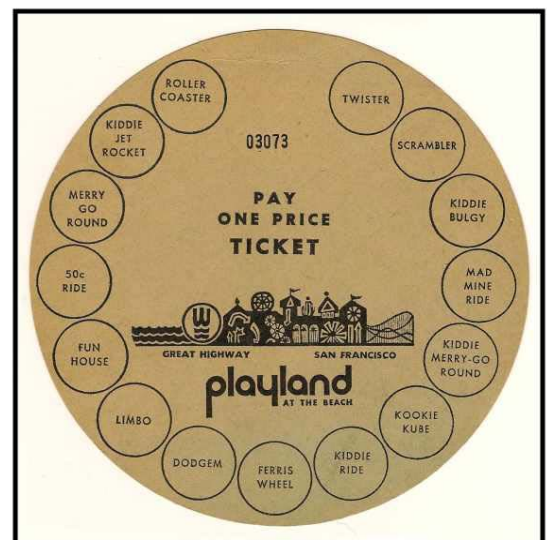




Eventually Topsy's Roost closed and the space became Skateland and later, the Slotcar Raceway.

George and Leo Whitney owned and operated amusements at Playland for more than 40 years.

After George's death, Playland was sold to developer Jeremy Ets-Hokin. Playland was torn down in 1972 and now the property is occupied by condominiums.



Roster Additions

Welcome to Lee and Gary Kirk!!

Kirk Lee	1791	
Kirk Gary	1792	Eugene, OR

Collect: Cats; Oregon Trail; poultry; dressed chickens and rabbits
Dealer: The Prints & The Paper
Website: www.kirksbooks.com



Maggie's Minutes



Greetings Webfooters,

I hope everyone is enjoying this lovely warm weather, I couldn't believe it when I heard someone complain about the heat at Oaks Amusement Park the other day. It was 71 degrees!

At the June 18th meeting Arne Soland was out of town, so Al Powers stepped in to fill his shoes. He presented Mark Moore with a framed lifetime honorary membership certificate for all his priceless contributions to The Webfooters. He is the main reason that our club has not only kept active, but has continued to thrive. Thank you so much Mark for everything that you do. All of us do appreciate your hard work. As Al said you are a super leader.

Financial Report – Arne Soland reported on July 16th 2011 that the club has \$8,542.49 total in our treasury. Checking 1 has \$2,625.49, Checking 2 has \$3,671.25. CD#1 has \$1,192.66 and CD#2 has \$1,052.76.

Report of Standing Committees

Membership – Chair Krissy Durden reported that there are 220 members. (1 charter, 91 families, 96 individuals, 26 patrons and 6 honor members).

Refreshments – There is a sign-up sheet at the monthly meetings if you can help us. Reimbursement of up to \$40 is available for those contributing this service. If you are providing refreshments don't forget to save your receipts for Arne. Thanks to Mark Moore for supplying condiments, juice and bread. Terry Weis contributed some Boston Cream Cakes and Janice Ahl brought a nice pasta salad. Thank you for continuing to support our food efforts.

Donna Miller reported that Adolphe Colson has been moved to the Firwood Gardens assisted living facility near 122nd and Glisan. If you can lift a wheelchair and can assist in getting him to any of our meetings, he would really appreciate a ride. It is not far from the Grange Hall where we meet. We were sorry to hear about the loss of Don Swearingen who passed away from a rare form of cancer last month.

Mark is still hopeful we can arrange a group tour of the Curtis Transportation Collection. Due to expansion of Powell Boulevard, the collection may be disbanded. Several of the items are being pursued by the Smithsonian. It is located at 10177 SE Powell Boulevard. Webfooter Bill White has photographed many of the horse drawn carriages and vehicles.

We are looking for people to fill several club officer positions. Without officers and board members we cannot carry out the duties of our Constitution and Bylaws. We usually have no more than 6 board meetings per year and ask that you commit to going to those meetings. Tony Roberts will not be able to run for Vice President due to his work schedule. We also need at least 2 directors from the club at large. Please consider helping us out by joining our board.

The next board meeting will be held on September 14th, 2011 at Elmer's Restaurant at 10001 NE Sandy Boulevard.

Respectfully submitted,

Maggie Parypa, Secretary

Find us on Facebook 

Please join us on Facebook to get reminders about meetings, special collections and to keep in touch. When on Facebook, just do a search for Webfooters PostcardClub.

See the full color version of this newsletter at www.thewebfooters.com



Club Officers

President/Editor.....	Mark Moore
Vice President.....	Tony Roberts
Secretary.....	Maggie Parypa
Treasurer.....	Arne Soland
Membership Chairman.....	Krissy Durden
Director.....	Irene Adams
Historian.....	Joe Macdonald
Librarian.....	Steve Kuryk



Calendar

August 20 – Webfooters Post Card Club Meeting at Russellville Grange
12105 NE Prescott St near 122nd & Sandy Blvd – 10:00 am to 3:30 pm

September 14 – Webfooters Board Meeting at Elmer’s Restaurant (no host)
10001 NE Sandy Blvd – 6:30 pm (Board Meetings held every other month)

September 17 – Webfooters Post Card Club Meeting at Russellville Grange
12105 NE Prescott St near 122nd & Sandy Blvd – 10:00 am to 3:30 pm

For the latest news, visit our website:



www.thewebfooters.com

Find us on Facebook



WEBFOOTERS POST CARD CLUB

PO Box 17240
Portland OR 97217-0240



WHITNEY BROS' FAMOUS PLACES TO DINE AT THE BEACH

The HOT HOUSE
SPECIALIZING IN ENCHILADAS - TAMALES - TOSTADAS - CHILE RELLENOS AND OTHER DELICIOUS MEXICAN AND SPANISH DISHES - PREPARED BY EXPERTS AND SERVED IN THE DELICIOUS, ATMOSPHERE OF SUNNY MEXICO

The "IT" STAND
FAMOUS FOR PLATE BROILED STEAK MEAT HAMBURGERS COOKED WITHOUT GREASE - AND ELECTRIC GRILLED HOT DOGS CONTAINING VITAMIN "D" - MADE ESPECIALLY FOR OUR USE-GOOD COFFEE ALWAYS

The PIE SHOP
HOMEMADE PIES & CAKES - TURNOVERS - SANDWICHES - FRESH FROZEN ICE CREAM AND FOUNTAIN SPECIALS - ALL ICE CREAM - PIES & CAKES SERVED IN WHITNEY BROS. RESTAURANTS AND STANDS - ARE MADE HERE

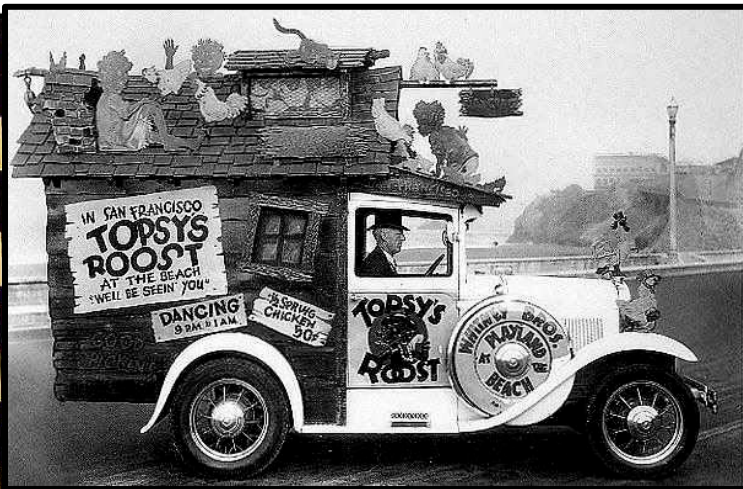
The SEA LION Cafe
BREAKFASTS - LUNCHES - DINNERS - STEAKS - CHOPS - HAM AND EGGS - WAFFLES - HOT OR COLD SANDWICHES - HOME MADE PIES - SPECIAL SUNDAY DINNERS - THE SEA LION IS A POPULAR PLACE FOR SUNDAY BREAKFASTS

The WAFFLE SHOP
SPECIALIZING IN CREAM WAFFLES - STRAWBERRY AND PECAN WAFFLES - HOT CAKES WITH LITTLE FIG SAUSAGES - BACON OR HAM - STEAK BEEF HAMBURGERS - ELECTRIC GRILLED HOT DOGS - CHOW MEIN - PIES & CAKES

TOPSY'S ROOST
FEATURING THE WORLD'S MOST DELICIOUS FRIED CHICKEN - BAKED BEAN - CHICKEN PIE - CORN PONES - HOT BISCUITS - WAFFLE FRIED POTATOES - AND OTHER DELICIOUS SOUTHERN DISHES - DANCING - PARTIES & BARBUEETS

The CLIFF HOUSE
SAN FRANCISCO'S FINEST AND MOST HISTORIC DINING PLACE - SPECIAL SUNDAY MORNING BREAKFASTS - KITCHENS - DINNERS - CUISINE UNEXCELLED - BEAUTIFUL MARINE DINING ROOM - NATIVE REDWOOD BAR AND COCKTAIL LOUNGE

PLAYLAND AT THE BEACH S.F.



SEE PAGE 3 FOR THE STORY OF PLAYLAND AT-THE-BEACH.