



THE WEBFOOTER

Celebrating 44 Years

"Every subject known to man can be found on a post card" -- Club Motto
ESTABLISHED 1966

**THE OFFICIAL PUBLICATION OF THE
WEBFOOTERS POST CARD CLUB IN PORTLAND, OREGON**

www.thewebfooters.com

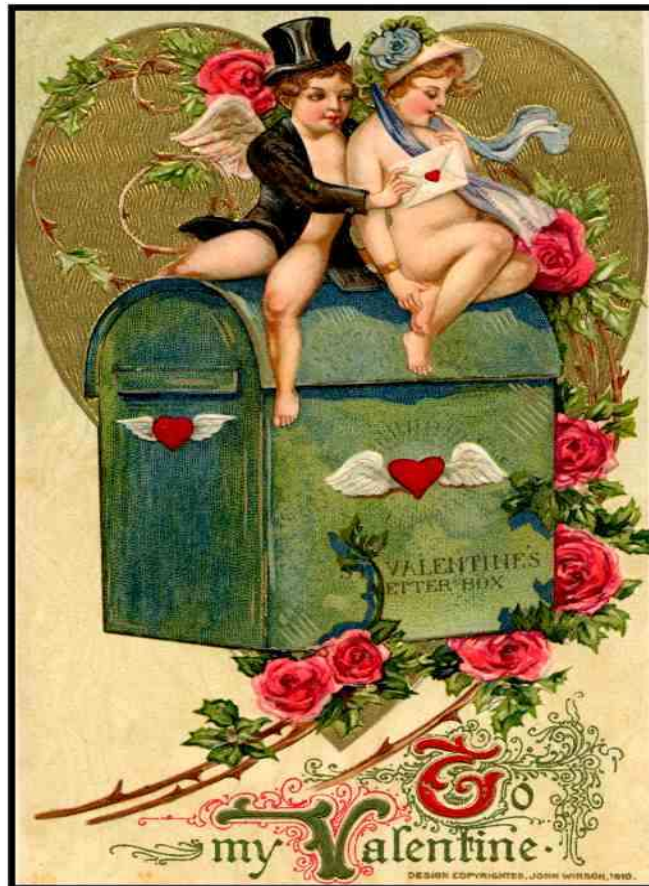
Volume 44

Issue Number 2

February 2010



Happy Valentines Day



Valentine Courtesy of Maggie Parypa

- ◆ See Mark's Council Crest Amusement Park on a Mountain Top on Page 4.
- ◆ Maggie's Minutes and New Members on Page 9.

Next Meeting – February 20, 2010

At Russellville Grange – 12105 NE Prescott Street

10 am to 3:30 pm

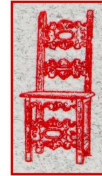


Somewhere in Time

Antique to Modern

Roy and Linda Bell

503-820-1137



Specializing in

- Advertising, Cameras
- Glass, Jewelry, Military
- Postcards, Vintage Photos, Furniture

Wed-Sat 12-5 By Chance or appointment

1412 E Burnside St

Portland OR 97214

bell6847@comcast.net



Now Located at:

FARMHOUSE ANTIQUES

Mini Mall in Old Historic Sellwood with Seven Dealers

Tuesday thru Sunday: 11 to 5

Glassware - Depression - Elegant

Postcards - Paper - Sheet Music

Jewelry - Furniture

See Janice on Tuesdays

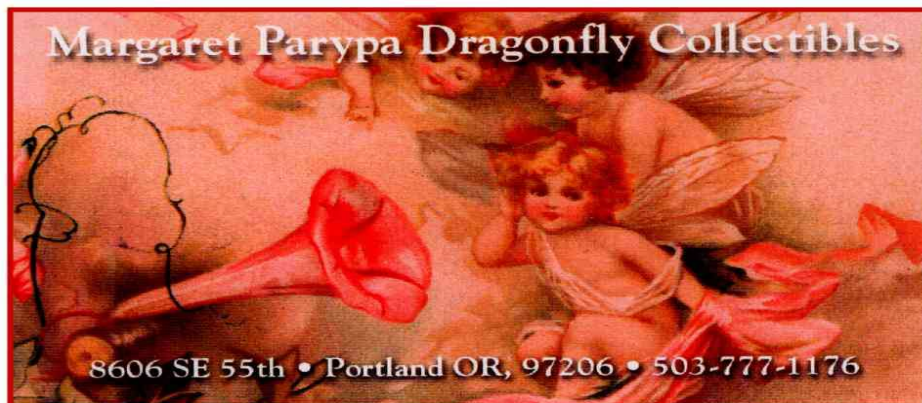
8028 SE 13th Avenue

Portland OR 97202

503-232-6757

Also in Farmhouse Antiques in Sellwood

8028 SE 13th Avenue



(paid advertisements)



Northwest Collectibles Presents

The Largest Antique Paper Shows in the Northwest

**The Greater Portland
Postcard, Stamp & Paper
Collectibles Show**

February 27 and 28, 2010

**Kliever Armory
10000 NE 33rd Drive
Portland, Oregon**

**The Greater Seattle
Postcard & Paper
Collectibles Show**

February 20 and 21, 2010

**Kent Commons
525 4th Avenue N
Kent, Washington**

**Old Postcards, Photographs, Stereo View Cards, Books,
Stamps, Valentines, Matchbooks, Magazines, Prints,
Maps, Trade Cards, Movie Posters & Much More!**

Show Hours:

Saturday: 10 am - 6 pm

Sunday: 10 am - 4 pm

Admission: \$5 (Good for Saturday & Sunday)

Upcoming Shows:

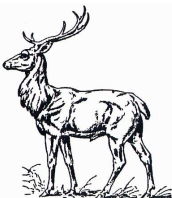
Portland Oregon
at Kliever Armory
June 19 and 20, 2010

Kent Washington
at Kent Commons
June 26 and 27, 2010

Call or Write:

Terry Weis
601 NW 72nd Circle
Vancouver, WA 98665-8462
503-679-4755

Jeremy LeRoque
6393 Hemlock Street
Redding, CA 96001-5070
626-665-9435



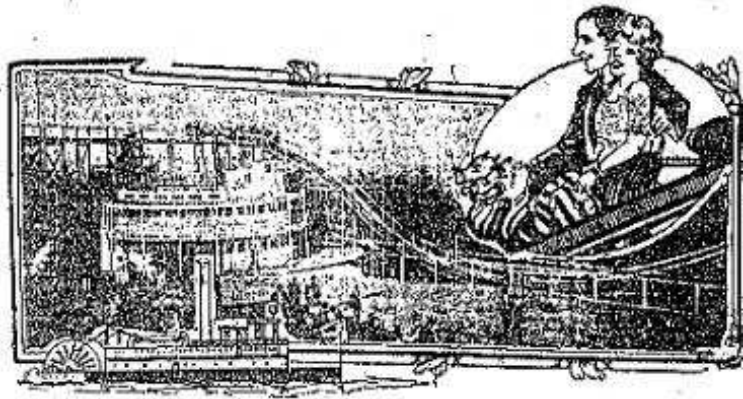
www.postcardshows.com

FREE APPRAISALS

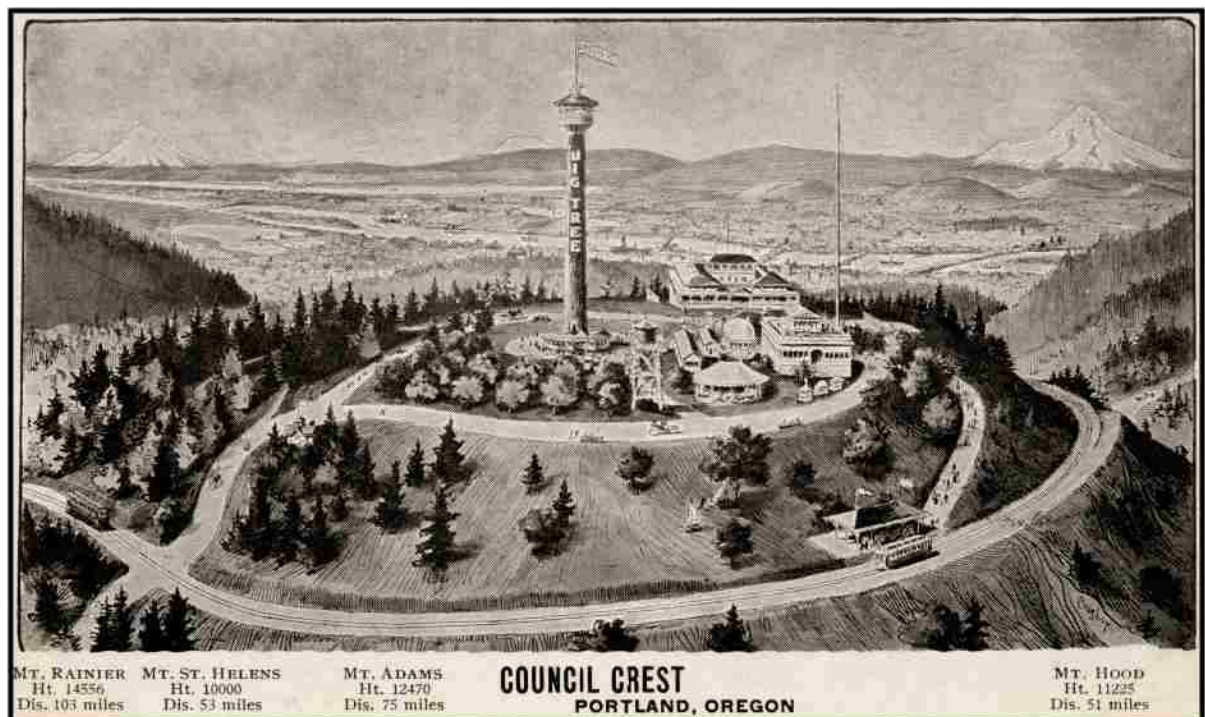
Council Crest

by Mark Moore

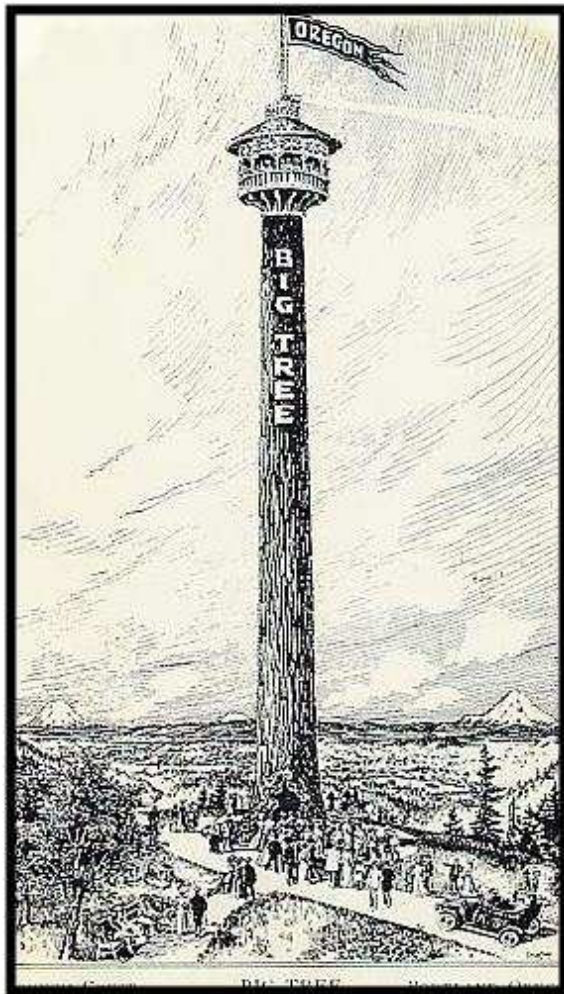
The Amusement Park on a Mountain Top



If you are familiar with Portland, you know what incredible views are afforded atop Council Crest. From Council Crest (on a clear day) you can see five snow-capped peaks and 3,000 square miles of land and rivers that connect them together. But unless you were here early in the 20th century, you might not know that an amusement park once ruled the Crest. It was heralded as "The Dreamland of the Northwest."



Council Crest Park opened on Memorial Day in 1907. It was famous for its Big Tree Observatory, which had an elevator to the Top of the Town. There was the Trip Up the Columbia, the boat ride that encircled the park. You could also ride the L.A. Thompson Carousel, the Ferris Wheel, the L.A. Thompson Scenic Railway and other rides. There was a Midway full of amusements as well as a dance pavilion.

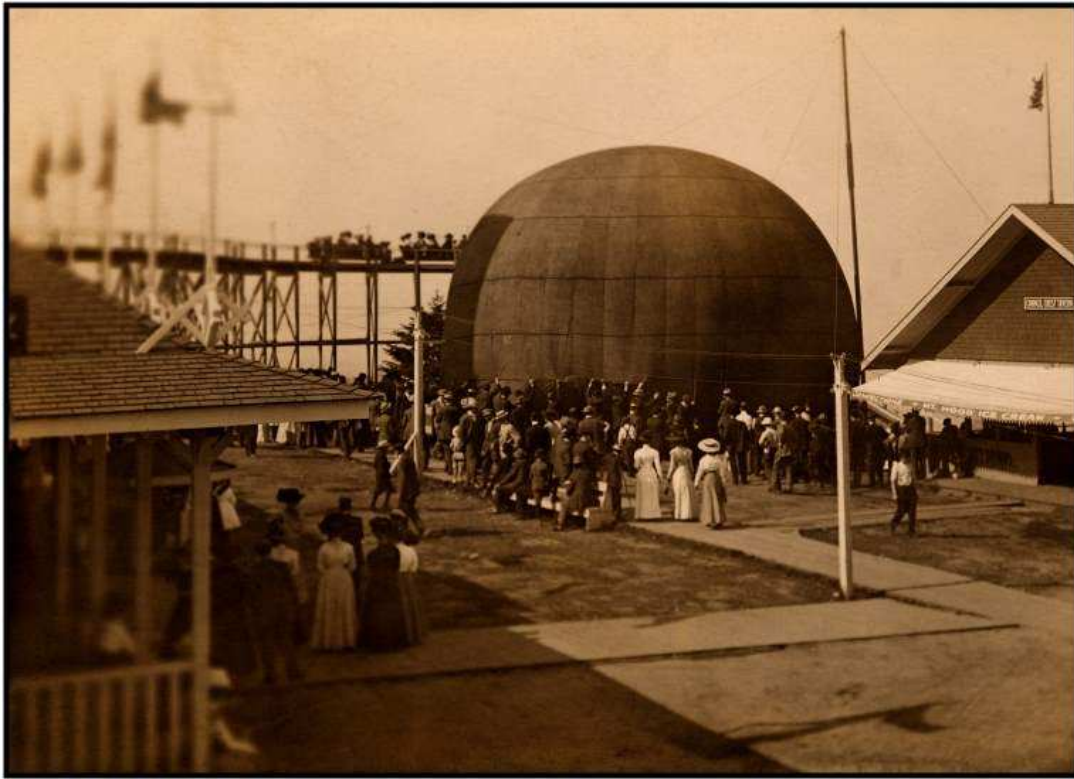


The Big Tree was erected in 1905 for the Lewis & Clark Centennial Exposition at the peak of Council Crest. The tree was hollowed out and an elevator was placed inside the tree, taking passengers to the Lewis & Clark Memorial Observatory at the top. Not long after Council Crest Amusement Park opened, a bolt of lightning split the Big Tree down the middle. The tree was replaced with a shorter tower observatory and lightning struck it a few years later, destroying all but the base. A third shorter observatory was built on the base of the second tower and it stood until 1940.



Early view of the Ferris Wheel with the Observatory and the Midway at the top of the town.

It was an unproven belief that the park site had been a traditional council ground for Native American Indians; therefore, the name "Council Crest." The park was conceived by the Portland Railway Light & Power Company to attract ridership on the newly completed Portland Heights streetcar line which opened to Council Crest Park in 1907. PRL&P summoned La Marcus Thompson from Coney Island to build most of the attractions at the park.



Patrons at the park lined up to take hot air balloon rides as the balloon was being filled with heated air. In the background you can see the L.A. Thompson Scenic Railway.



The Japanese Tea Pavilion is seen on the left and the round Carousel building is in the center.



The Council Crest Tavern featured Mt. Hood Ice Cream and confections as well as fruits, candies, cigars and tobacco.



Benjamin Gifford view of the Miniature Railway, the Trip Up the Columbia and the Scenic Railway.



Council Crest Cars 503 and 506.

Pittmon's Guide for 1915 described the trip on the Portland Heights streetcar line to Council Crest as "One of the most beautiful trolley rides in the world, taking you in 20 minutes from the heart of the business district to the height of 1073 feet, unfolding before you a scenic panorama for grandeur unexcelled. The hustling city in the foreground nestling on both banks of the Willamette (wil-lamb-met) River is 12 miles from its confluence with the Columbia River."



The Scenic Boat at Council Crest was the starting point for the Ride Up the Columbia.



The Council Crest Pavilion, Portland's most popular dance hall was on the Midway.

As the nation headed into the Great Depression, the Park couldn't sustain another money-losing season and Council Crest Amusement Park closed for good on Labor Day 1929. Even after the amusement park was gone, Council Crest trolleys made regular trips to the top until 1950 to make the breathtaking views available to all. The Observatory was torn down in 1940.



Maggie's Minutes

Attending the January 13, 2010 Webfooter's Board Meeting, held at Elmer's Restaurant were: Mark Moore (President), Maggie Parypa (Secretary), Arne Soland (Treasurer), Krissy Durden (Membership) and Irene Adams, (Director). After a call to order at approximately 7:00 PM, the minutes of the previous meeting were approved as published.

Financial Report - Arne Soland gave a financial report.

Report of Standing Committees

Membership - Membership Chair Krissy Durden reported that there are 230 Active Members (104 individual members, 98 Family Members, 21 Patron Members, 6 Honor Members and 1 Charter). Krissy has volunteered to set up a communication Web site for Portland postcard collectors similar to Facebook. We would be able to share messages and promote our upcoming events to non-members. We'll keep you posted on her progress.

Refreshments - Reimbursement of up to \$30 is available for those contributing this service. If you are providing refreshments don't forget to save your receipts for Arne. Thanks to Jane Burton and Ron Robertson for providing a very enjoyable lunch faire. Thanks to Terry Weis for donating delightful doughnuts, and to Maggie for chili made from the Christmas ham that the club provided.

Our 4th Annual Antique Paper Auction is coming up **April 16, 2010 at The Grotto Conference Center** near 85th & Sandy Blvd. We need your high-quality postcards and ephemera for consignment no later than March 15, 2010. Meals will be \$20.00 with several selections available. Dusty has agreed to be our auctioneer once again; he is one of the best in the biz. Volunteers for the auction committee are Irene Adams, Roy Bell, Glenn Mason, Frank Tyrrell and Dusty Schmidt.

Our 30th Annual Antique Paper Show is coming up on **April 17-18, 2010**. We have a limited number of dealer tables left at \$65 each.

Our thoughts and prayers go out to Al Powers and his wife Lois. Al was in intensive care after surgery to remove a blood clot between his brain and skull. After nearly a week in the hospital, he returned home where he continues to improve.

Dave Elston is recuperating at home after lower back surgery and is improving steadily.

The next board meeting will be held on March 17th, 2010 at Elmer's Restaurant at 10001 NE Sandy Boulevard at 6:30 pm.

Respectfully submitted,

Maggie Parypa, Secretary

See the full color version of this newsletter at www.thewebfooters.com



Roster Additions

Welcome to Dick & Gyrid!

Towle Gyrid
Towle Richard

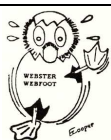
1776

Portland, OR

1777

Collect:

Norway; Anything interesting



Club Officers

President/Editor.....	Mark Moore
Vice President.....	Tony Roberts
Secretary.....	Maggie Parypa
Treasurer.....	Arne Soland
Membership Chairman.....	Krissy Durden
Directors.....	Irene Adams and Phyllis Palmer
Historian.....	Joe Macdonald
Librarian.....	Steve Kuryk



Calendar

February 20 – Webfooters Post Card Club Meeting at Russellville Grange
12105 NE Prescott St near 122nd & Sandy Blvd – 10:00 am to 3:30 pm

March 17 – Webfooters Board Meeting at Elmer's Restaurant (no host)
10001 NE Sandy Blvd – 6:30 pm (Board Meetings held every other month)

March 20 – Webfooters Post Card Club Meeting at Russellville Grange
12105 NE Prescott St near 122nd & Sandy Blvd – 10:00 am to 3:30 pm

For the latest news, visit our website:



www.thewebfooters.com



WEBFOOTERS POST CARD CLUB

PO Box 17240
Portland OR 97217-0240



See Page 4 for Mark Moore's
Council Crest Amusement Park
On a Mountain Top
copyright © 2010