



WEBFOOTER EXTRA

August 2019

Tillamook County Resort Towns



Garibaldi, Oregon

WEBFOOTERS POST CARD CLUB

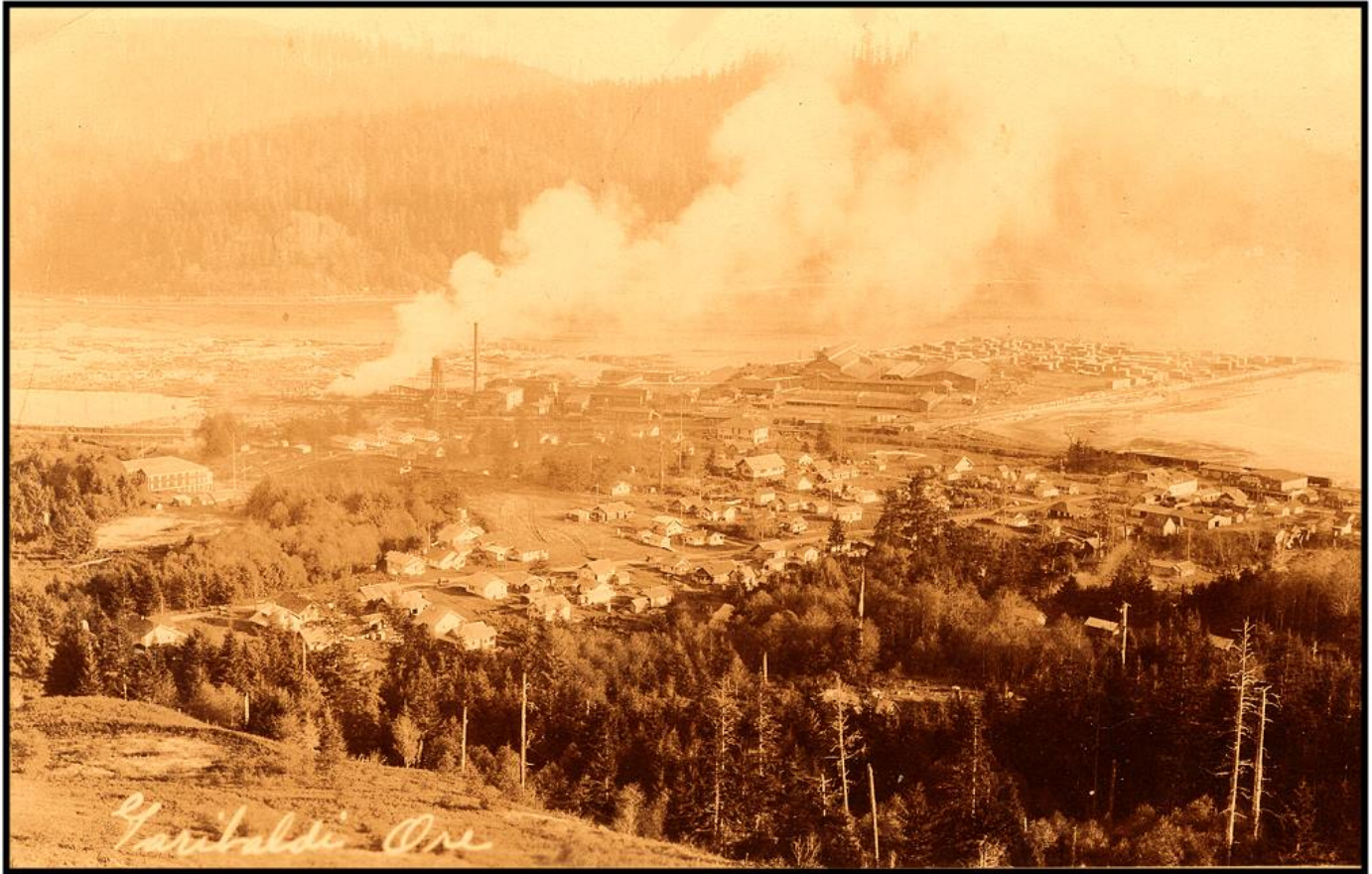
PO Box 17240

Portland OR 97217-0240



www.thewebfooters.com

Tillamook County Resort Towns - Garibaldi, Oregon by Steve King



Birdseye view of Garibaldi, Oregon.

Garibaldi is situated on the north shore of Tillamook Bay two miles from where it enters the sea. It has been an incorporated city since 1947. The 2010 population was 801, down from 1,500 in the mid-1950s when two large lumber and plywood mills were operating. From 1926 to 1954 it had its own high school, but now students attend Neah-Kah-Nie High School north of Rockaway Beach. About half the residences are second homes.

Garibaldi has always been a fishing village, first with the bay gill-net salmon fishery and cannery. The gill-net fishery was reduced in 1957 and eliminated in 1962. After World War II the Garibaldi boat basin was expanded and improved for bay fisheries, as well as ocean commercial fisheries for salmon, albacore tuna, bottom fish, Dungeness crab and Pacific shrimp. Sport fishing for bottom fish and bay and ocean salmon blossomed in the 1960s. Clamming and crabbing are also popular pursuits. Fishing, a hardwood lumber mill and tourism now sustain the town.

Daniel Dodge Bayley and his family came in 1862 and settled on what is now known as Bay Lane in Garibaldi, the first white settlers in the area. He called the location Bayley's Point. Bayley was born January 8, 1801 in Concord, New Hampshire. He came to Oregon in 1845 on an ox wagon and settled in Yamhill County's Chehalem Valley before he moved to Tillamook Bay. He died in Tillamook on March 29, 1893 at the age of 92. By his first wife he had two sons and five daughters, and by his second wife he had two more sons.

On March 14, 1869 Bayley was granted a patent deed from the General Land Office for 172.65 acres. It was subdivided and called the Bayley Park Addition. Bayley built and kept the Garibaldi Hotel, among other businesses. Along the east side of the hotel was the post office, established August 9, 1870. This was the same day the Nehalem post office was established. These were the second and third post offices in Tillamook County; Tillamook post office had been established March 12, 1866.

Bayley himself proposed the name Garibaldi over Bayley's Point. Giuseppe Garibaldi had been in the news a lot. Garibaldi was a military man devoted to the unification of Italy and establishing democracy around the world. Bayley considered Garibaldi to be a hero, and bestowed his name upon the post office.



The Elmore cannery on Tillamook Bay at Garibaldi. This is a pre-1890 view looking towards the Miami River.

Daniel Bayley was familiar with how to establish a post office. He had a prior donation land claim on Chehalem Creek, west of Newberg, Oregon in Yamhill County. There he established the Chehalem post office in his home, with himself as postmaster. It was a short-lived endeavor, from March 14, 1851 to January 1, 1852, just a little over nine months. On the Post Office Department Geographic Site Location Report for Garibaldi filled out by Bayley on July 6, 1870 he stated the village had ten inhabitants (mostly his family). He stated there were six families within two miles and fifteen families less than one-half the distance to the Tillamook post office.

Bayley died in 1893 and the post office was still standing next to his hotel. A pier ran several hundred feet into the Elmore Cannery. Salmon fishing boats could sail up to the cannery at high tide. The railroad depot was located just east of the post office. A wagon road now known as Bay Lane ran down to the depot, past Bayley's Garibaldi Hotel and post office and on to the Green Tree Hotel. The buildings are now all gone, and the lane terminates in a parking lot for clam diggers and pier crabbers.



View overlooking Garibaldi, circa 1920s.

The Garibaldi post office operated next to the Garibaldi Hotel for 50 years. On December 3, 1922 the post office was moved one-half mile east to a location near the railroad depot, which accommodated a shift in the center of population away from Bayley's Point.



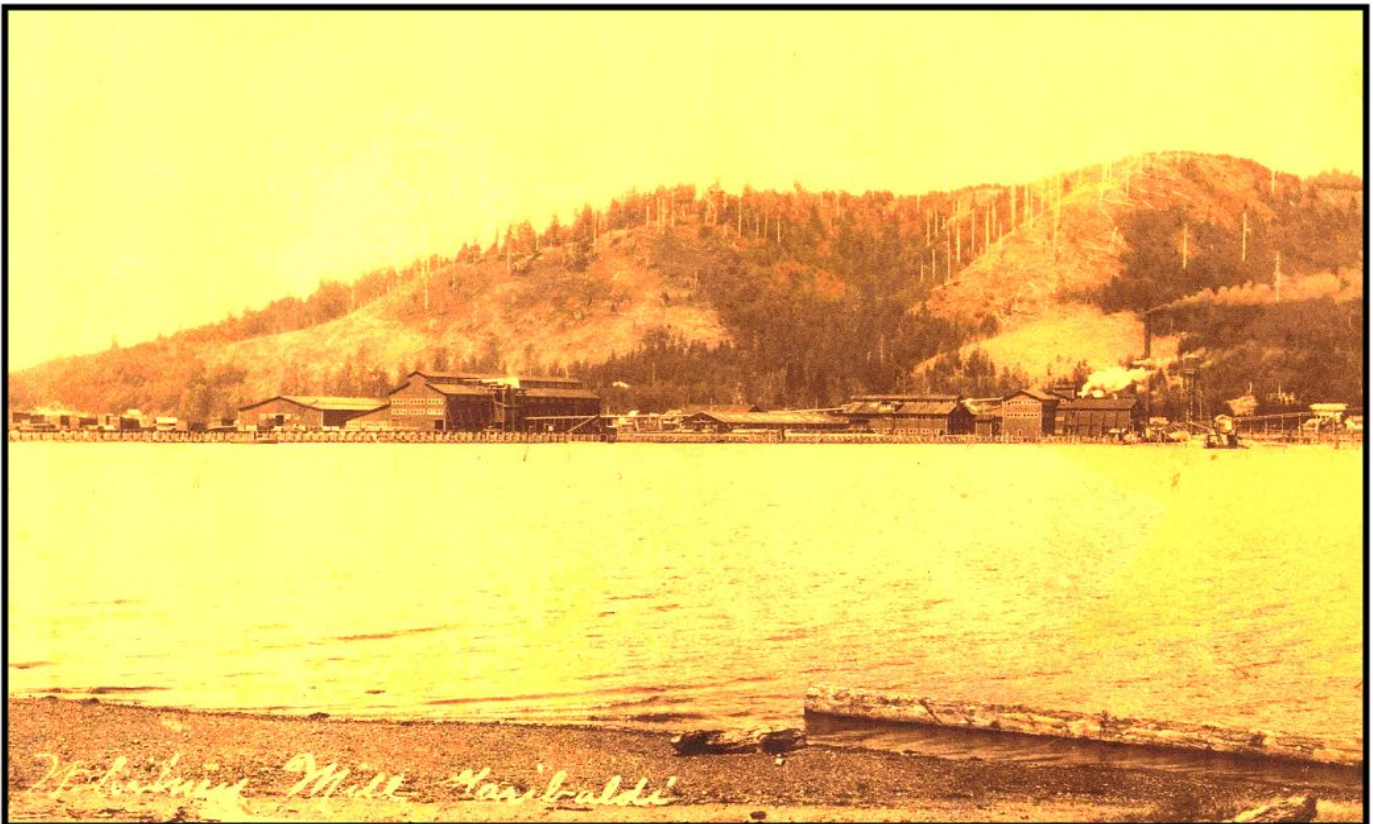
Bayley's Point, now north Garibaldi, circa 1920s.



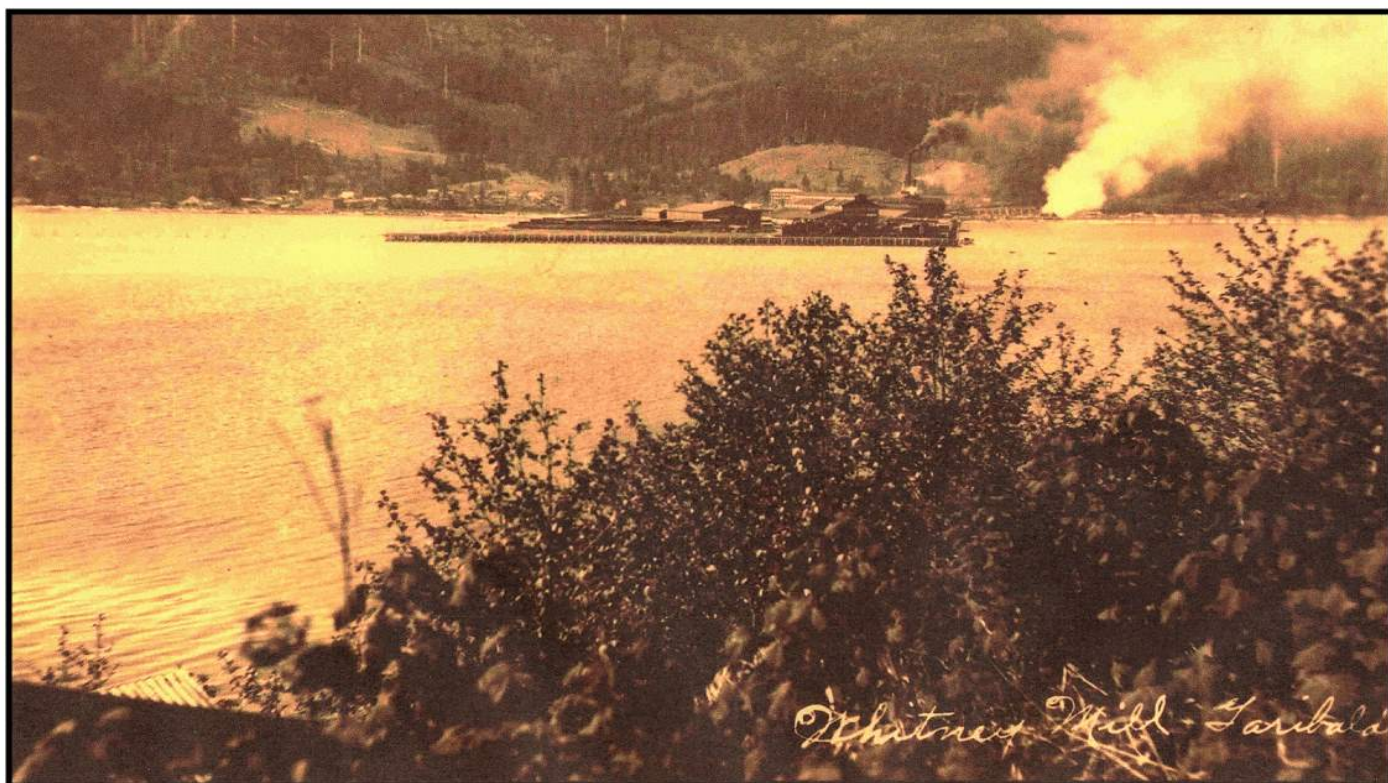
Bayley's Garibaldi Hotel with post office to the right (with ladder) after the railroad came through in 1911. Vacation rentals and homes now occupy the Garibaldi Hotel site.



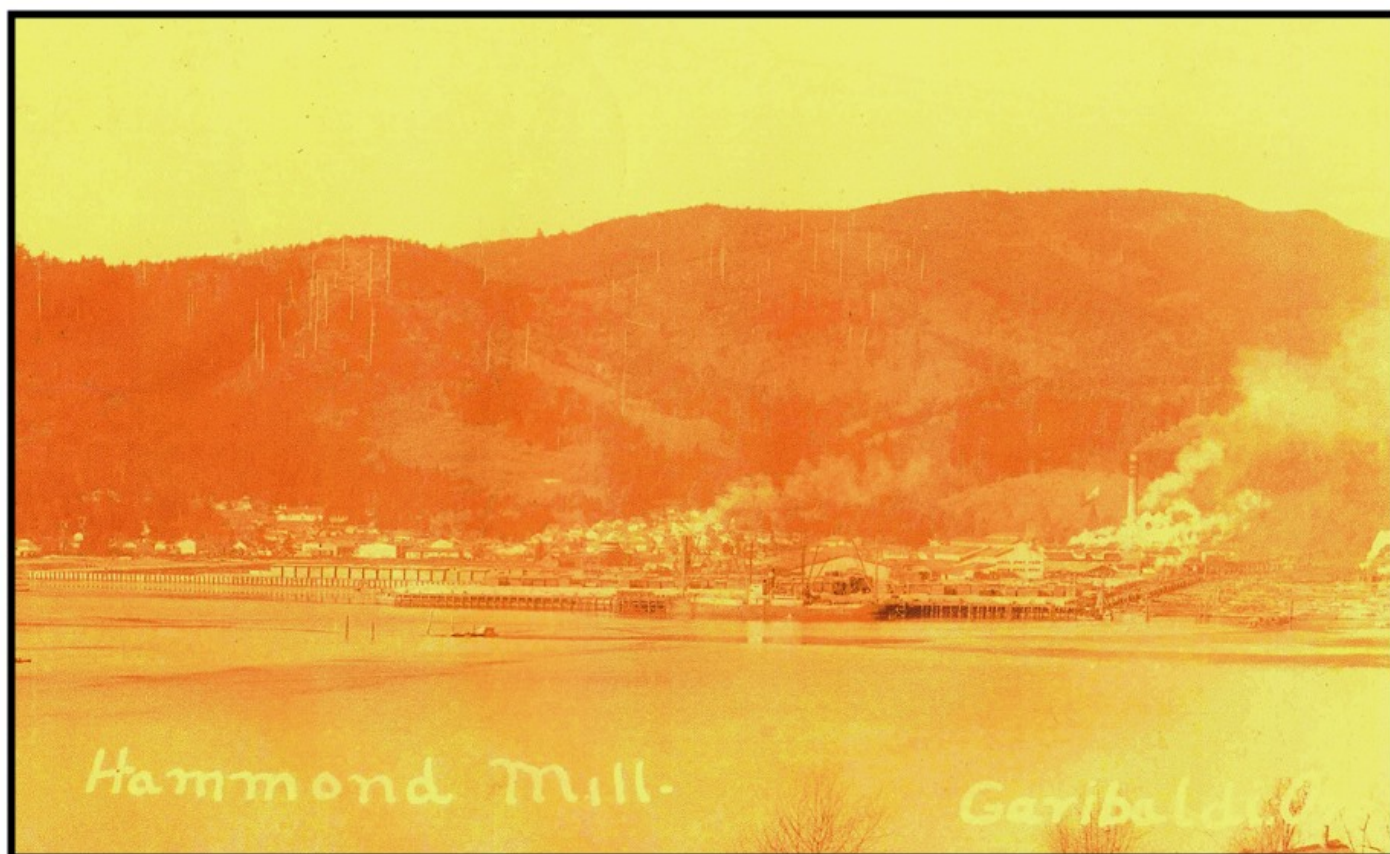
A second hotel was built some years after Bayley's known as the Green Tree Hotel, circa 1910. The site is now a parking lot.



The Whitney Mill along Miami Cove east of town began operations in 1921.



View of the Whitney Mill from Hobsonville Point.



The Whitney Mill became the Hammond Lumber Company.

Along with the mill, new houses and a hotel were built to accommodate employees and families. This rapidly increased Garibaldi's population. The post office was 75 feet east of the railroad tracks. The post office building is gone, and no photograph has been found that shows it. The depot still stands, but was moved to the west side of the tracks when Southern Pacific donated it for a park. The Garibaldi Lions Lumbermans Park is near the former location of the depot and post office.

After 14 years at the location near the depot, the post office was moved 200 feet to the north side of Highway 101, effective September 5, 1937. The building has been razed and a vacant lot remains. About 1960 the office moved again, relocating 300 yards north but still on Highway 101. It stayed at this site for 25 years, but the building deteriorated and it was vacated in 1985. A new building was erected one block up the hill at 511 Acacia Street, where it is located today. Judy J. (Riley) Riggs became the postmaster in 2004 and she retired in 2019.

The building that housed the post office 1960-85 still stands, but it has been extensively remodeled. Lee Godfrey came to Garibaldi in 1983 and opened a pharmacy near Garibaldi's third post office site. In 1985 he bought the old post office building and remodeled it for his business. In 1986 he opened in the new location and still operates it as Godfrey's General Store.

Garibaldi post office competed with the Hobsonville post office, which was located across Miami Cove, just a mile away by water, two miles by road. The Garibaldi office experienced five closures. With two of the closures the office was allowed to stay open, but as a "Special Office" under the management of the Hobsonville post office. But curiously, the Hobsonville post office was closed from October 26, 1887 to April 6, 1888 and the Garibaldi post office continued. However, when Hobsonville was reestablished April 6, 1888, the Garibaldi office simultaneously closed. For those six months, Garibaldi dominated.



This article was adapted from an article that Steve King wrote for Oregon Country, which is published four times a year by the Pacific Northwest Postal History Society.